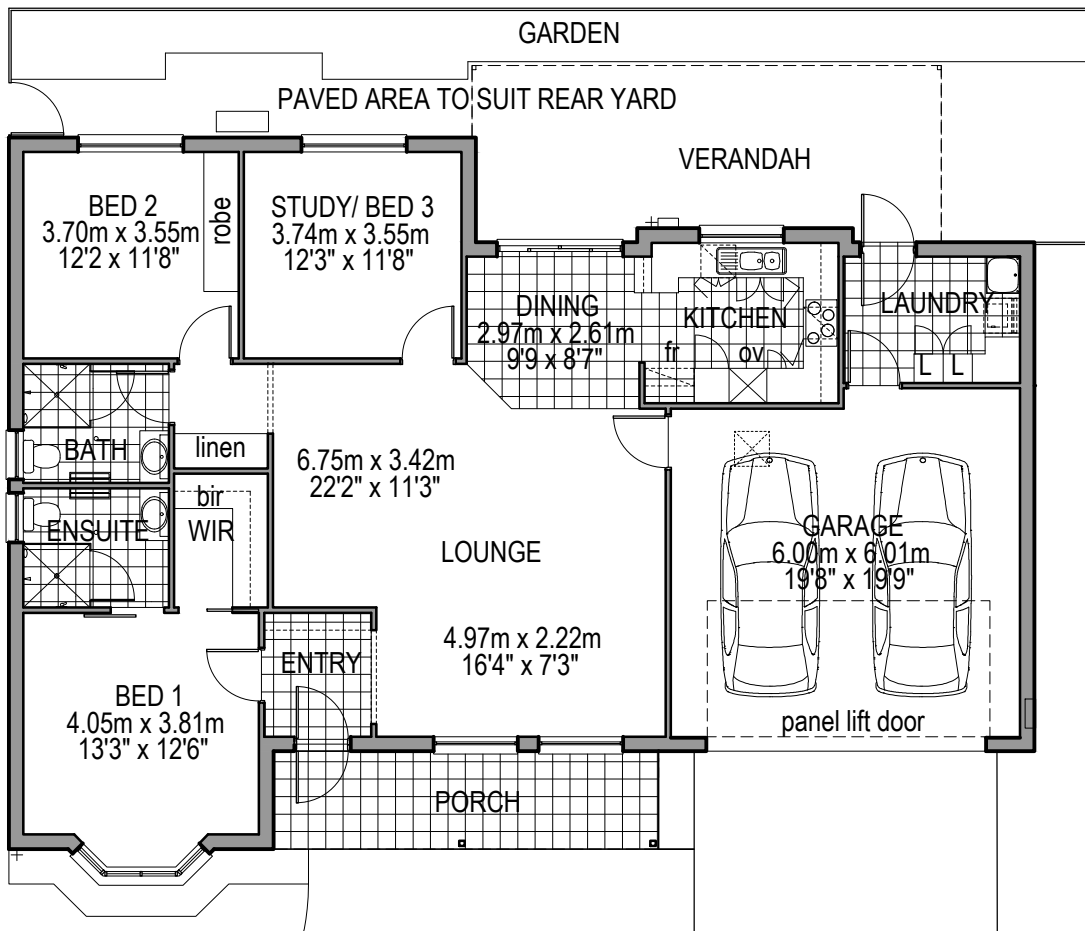


# Acacia

TYPE 1

## 3 Bedroom Villa + Double Garage



LIVING...	139.82m <sup>2</sup>	(15.05sq's)
GARAGE...	38.52m <sup>2</sup>	(4.14sq's)
PORCH...	11.12m <sup>2</sup>	(1.19sq's)
TOTAL...	189.46m <sup>2</sup>	(20.39sq's)

Disclaimer: These plans are indicative only & subject to alteration. Final plans by agreement between the client & the company.



29 Sidlow Road, Griffith, NSW 2680 Ph. 02 6961 8901  
[info@griffithretirement.com.au](mailto:info@griffithretirement.com.au) [www.griffithretirement.com.au](http://www.griffithretirement.com.au)

# Villas

## Standard Finishes and Inclusions

### External Features

- Private rear yards
- Coloured concrete patterned paving to rear yard
- Rear yard ready for resident planting
- Outback verandah
- Lift Up Clothes line
- Colorbond Good Neighbour Fencing
- Gas Instant Hot Water Service
- Landscaped front garden
- Weatherproof GPO Powerpoint
- Security doors to front, rear and sliding glass door
- Automatic garage door

### Internal Features

- 3 telephone / communication points
- 2 television points
- Smoke detectors / alarm
- Linen cupboard
- Aluminium windows
- Tiled entry, porch and dining
- Garage entry to villa
- Provision for Foxtel and Broadband
- Ducted reverse-cycle air to Type 1
- Ceiling height 2700 (9ft) to Type 1

### Kitchen

- Modern kitchen
- Stainless steel fan forced oven
- Ceramic cooktop and range hood, stainless steel finish
- Pantry
- Ceramic tiles
- 1.5 bowl sink with flip mixer tap
- Provision for future dishwasher
- Small bin in sink bench cupboard

### Bathrooms

- Exhaust fans / heat lamps
- Bathroom walls / floors tiled
- Pivot shower screens
- Mixer tap to shower and basin
- Wall tiles to 2 metres high Type 1

### Laundry

- Well sized laundry
- Storage cupboard
- Stainless steel tub
- Ceramic tiles